

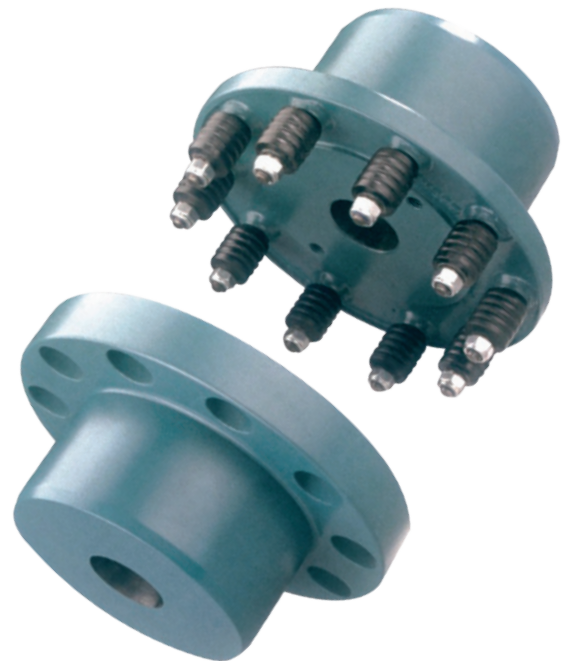
PENCO-flex

FLEXIBLE COUPLINGS

The **PENCO-flex coupling** is composed of two cast-iron hubs (the driving hub and the driven one). On the driving part, bolts have been mounted with rubber sleeves fixed to them. Snap rings restrict casing shifts caused by translational motion. Rubber vulcanized sleeves on wear-resistant brass inserts are fixed on the bolts with some clearance maintained. This allows them to rotate freely and to move slightly lengthwise.

As a result, the pressure exerted on the hubs is significantly reduced. The exceptional bulgy shape of the rubber sleeves with a notch in the girth ensures an even distribution of loads, even in cases of non-coaxiality of the coupled devices. It also decreases the torque caused by action of radial forces on the bolts. This in turn increases the durability of both the rubber sleeves and the bolts. PENCO-flex sleeves are composed of sleeves made of butadiene-styrene rubber containing 15% natural rubber and is vulcanized on brass inserts. To reduce the wear of the sleeves, the thrust is spread evenly along the whole contact line due to circumferential grooves on the surface of the flexible rubber sleeves. The total number of sleeves and bolts applied differs, depending on the coupling size. The sleeve hardness is 80° on the Shore A scale.

The admissible ambient working temperature for the sleeve operation ranges from - 40°C to + 90°C. Unless otherwise provided in the order specification, PENCO-flex couplings are normally supplied as non-drilled.



TECHNICAL PARAMETERS:

SIZE OF COUPLING	Nominal rated torque T_{rn} [Nm]	Maximal rotational speed n_{max} [rpm]	ACCEPTABLE MISALIGNMENT			SIZE OF COUPLING	Nominal rated torque T_{rn} [Nm]	Maximal rotational speed n_{max} [rpm]	ACCEPTABLE MISALIGNMENT		
			axial [mm]	radial [mm]	angular [mm]				axial [mm]	radial [mm]	angular [mm]
145	250	4700	3,5 ^{+1.5}	0,2	0,3	460	21000	1500	5,5 ^{+2.5}	0,3	0,6
155	400	4400	3,5 ^{+1.5}	0,2	0,3	510	31000	1350	7,0 ⁺³	0,4	0,9
175	630	3900	3,5 ^{+1.5}	0,2	0,3	575	45000	1200	7,0 ⁺³	0,4	0,9
200	1000	3400	3,5 ^{+1.5}	0,2	0,3	670	65000	1000	7,0 ⁺³	0,4	0,9
235	1600	2900	4,0 ⁺²	0,25	0,45	725	94000	950	8,5 ^{+3.5}	0,5	1,2
245	2500	2800	4,0 ⁺²	0,25	0,45	850	140000	800	8,5 ^{+3.5}	0,5	1,2
280	3900	2450	4,0 ⁺²	0,25	0,45	990	200000	700	8,5 ^{+3.5}	0,5	1,2
315	6100	2200	4,0 ⁺²	0,25	0,45	1060	285000	650	10,5 ^{+4.5}	0,75	2,2
355	9300	1950	5,5 ^{+2.5}	0,3	0,6	1220	410000	550	10,5 ^{+4.5}	0,75	2,2
385	14000	1800	5,5 ^{+2.5}	0,3	0,6	1420	600000	480	10,5 ^{+4.5}	0,75	2,2

Application:

- Pumps, conveyors, cranes, mixers, centrifuges, compressors as well as many other machines and devices